



IN QUESTO LISTINO:

MATERIALE:

Raccordi in Polipropilene (omopolimero).
Su richiesta: raccordi in PE100.

COLORE:

Grigio ghiaia (RAL 7032).

GIUNZIONE:

Per polifusione nel bicchiere dal Ø 20 al Ø 110
e per saldatura di testa dal Ø 63 al Ø 630
secondo serie metrica ISO 161-1
per accoppiamento a tubi corrispondenti
alle norme UNI 8318, DIN 8077, EN ISO 15874.

TEMPERATURA MASSIMA DI ESERCIZIO:
100°C.

PRESSIONE MASSIMA DI ESERCIZIO:

Raccordi per polifusione nel bicchiere:
10 bar a 20°C (adduzione acqua).
Raccordi per saldatura di testa: 10 bar per SDR11 (PN10),
6 bar per SDR17,6 (PN6) e 4 bar per SDR 26 (PN4)
(adduzione acqua).

Per il dettaglio delle pressioni d'esercizio
si rinvia al catalogo tecnico-dimensionale.
Uso non certificato con fluidi gassosi compressi.

TRASPORTO ACQUA POTABILE:

Idoneità al trasporto di acqua potabile
in accordo con la legislazione italiana
e le direttive europee.

IN THIS PRICE LIST:

MATERIAL:

*Polypropylene (homopolymer) Fittings.
On demand: fittings PE100.*

COLOUR:

Pebble grey (RAL 7032).

JOINTING:

*By socket fusion welding from Ø 20 to Ø 110
and by butt welding from Ø 63 to Ø 630
according to metric serie ISO 161-1
for jointing to pipes conforming
to UNI 8318, DIN 8077, EN ISO 15874.*

MAXIMUM WORKING TEMPERATURE:
100°C.

MAXIMUM WORKING PRESSURE:

*Socket fusion welding fittings:
10 bar at 20°C (water supply).
Butt welding fittings: 10 bar for SDR11 (PN10),
6 bar for SDR17,6 (PN6) and 4 bar for SDR26 (PN4)
(water supply).*

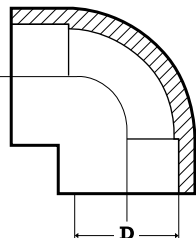
*For details about working pressure, please,
refer to our technical-dimensional catalogue.
Use not certified with compressed gaseous fluids.*

USE FOR POTABLE WATER:

*Fitness to the transport of drinking water
according to Italian law
and European directives.*

Gomiti 90°
Elbows 90°

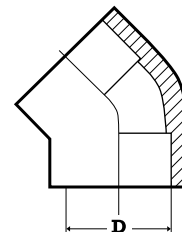
PPF90GO



D	Euro
20	1,99
25	2,19
32	2,69
40	3,45
50	6,28
63	8,09
75	15,69
90	20,39
110	29,49

Gomiti 45°
Elbows 45°

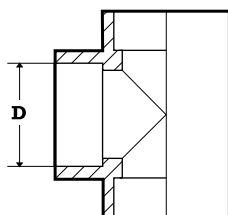
PPF45GO



D	Euro
20	2,83
25	3,01
32	3,45
40	4,08
50	5,65
63	7,85
75	15,13
90	19,95
110	30,76

Te 90°
Tees 90°

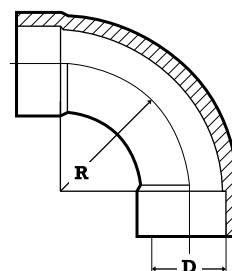
PPF90TE



D	Euro
20	2,26
25	2,39
32	2,89
40	3,45
50	6,58
63	8,15
75	16,32
90	26,99
110	37,03

Curve 90° - R=1,5
Bends 90° - R=1,5

PPF90CR

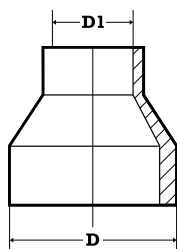


D	Euro
75	25,67
90	29,15
110	51,31

Riduzioni MxF

Reducers MxF

PPFR

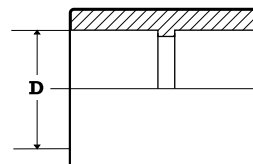


D	D1	Euro	D	D1	Euro
25	20	1,89	75	50	6,64
32	20	1,99		63	6,64
	25	1,99	90	40	11,87
40	25	2,76		50	9,91
	32	2,76		63	9,91
50	32	3,33		75	9,91
	40	3,33	110	50	13,62
63	25	4,96		63	13,62
	32	4,13		75	13,62
	40	4,13		90	13,62
	50	4,13			

Manicotti

Sockets

PPFMATI

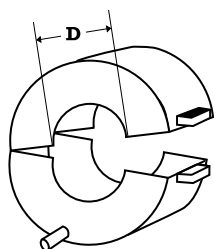


D	Euro
20	1,56
25	1,67
32	1,89
40	2,26
50	3,77
63	6,10
75	8,47
90	11,31
110	13,81

Copri Flange stampati in PP

Flange Covers PP Moulded

PPCOFLA



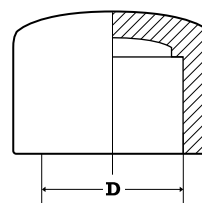
D	DN	Euro
20	15	12,99
25	20	12,99
32	25	12,99
40	32	17,33
50	40	17,33
63	50	17,33
75	65	24,32
90	80	24,32
110	100	37,94
125	125	53,40
140	125	
160	150	64,80
180	200	
200	200	71,79
225	200	
250	250	123,01
280	250	
315	300	150,53

Sconto differenziato.
Separate discount.

Calotte

Caps

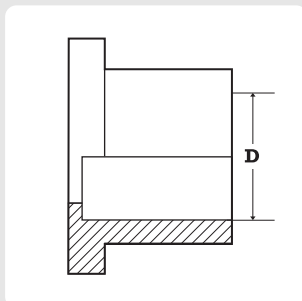
PPFCALO



D	Euro
20	1,39
25	1,56
32	1,89
40	2,14
50	3,51
63	4,40
75	8,09
90	11,31
110	15,05

Collari
Stub Flanges

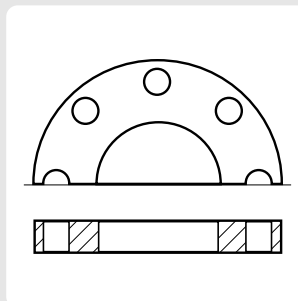
PPFCART



D	Euro
20	1,39
25	1,45
32	1,62
40	2,08
50	2,32
63	3,14
75	5,83
90	10,04
110	13,81

Flange libere PN10 PVC per collari PPFCART
PVC Backing Rings PN10 for stub flanges PPFCART

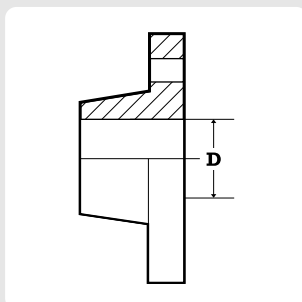
CVFUPC



D	DN	Euro
20	15	2,95
25	20	3,11
32	25	3,60
40	32	4,74
50	40	5,26
63	50	6,05
75	65	7,13
90	80	8,15
110	100	10,15

Flange a collare PP PN10
PP Slip on Flanges PN10

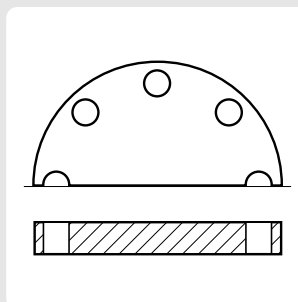
PPFFLUC



D	DN	Euro
20	15	4,72
25	20	5,04
32	25	5,74
40	32	8,27
50	40	10,66
63	50	12,91
75	65	16,40
90	80	20,37
110	100	23,23

Flange cieche PP PN10
PP Blank Flanges PN10

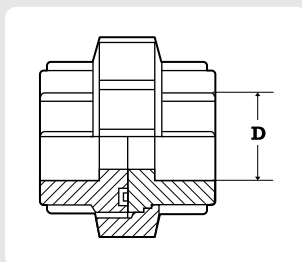
PPFCUD



D	DN	Euro
20	15	4,30
25	20	4,58
32	25	5,21
40	32	7,54
50	40	9,71
63	50	11,76
75	65	14,93
90	80	18,51
110	100	21,12
125	125	47,21
140	125	47,21
160	150	69,74

Bocchettoni
Socket Unions

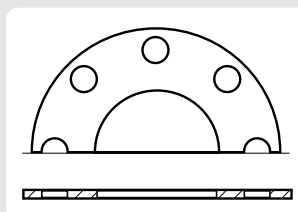
PPFBOCH



D	Euro
20	9,09
25	9,42
32	10,55
40	15,69
50	19,45
63	28,87

Guarnizioni per collari
Gaskets for stub flanges

GUAREPDM



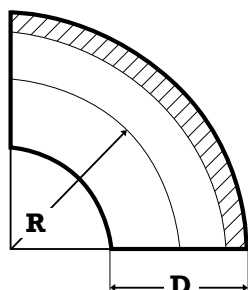
D	DN	Euro
20	15	2,10
25	20	2,25
32	25	2,75
40	32	2,75
50	40	2,75
63	50	3,17
75	65	3,29
90	80	3,42
110	100	4,13

A richiesta guarnizioni per diametri maggiori.
On request gaskets for larger diameters.

Sconto differenziato.
Separate discount.

Curve 90° - R=1,5 D Bends 90° - R=1,5 D

PP: 90CR(D)P(PN) - PE 100 : PH90CR(D)(PN)



	SDR26	SDR17,6	SDR11
PP	PN4	PN6	PN10
PE100	PN6,3	PN10	PN16
D	Euro	Euro	Euro
90	-	11,84	13,31
110	13,31	16,25	17,86
125	-	26,61 *	27,71
140	22,91	31,66	38,81
160	32,51	41,35	44,95
180 **	-	56,16	60,35
200 **	47,29 *	69,46	86,21
225 **	57,63	84,17	104,69
250 **	76,78 *	138,85	172,41
280 **	96,00	171,30	230,89
315 **	125,56	270,25	314,03
355 **	284,25	378,69	569,56
400 **	351,46	449,48	754,29
450	-	***	***
500	-	***	***

*) A richiesta, per quantità.
On request, for quantities.

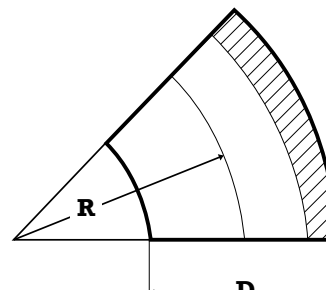
PE a richiesta per quantità
PE on request for quantities

**) La curva è ottenuta tramite due curve a 45° saldate testa a testa.
The bend is obtained by two butt welded 45° bends.

***) Prezzi a richiesta.
Curve ottenute da quattro settori di tubo PP saldati testa a testa.
Prices on request.
Bends obtained by four sectors of PP pipe, all butt welded.

Curve 45° - R=1,5 D Bends 45° - R=1,5 D

PP: 45CR(D)P(PN) - PE 100 : PH45CR(D)(PN)



	SDR26	SDR17,6	SDR11
PP	PN4	PN6	PN10
PE100	PN6,3	PN10	PN16
D	Euro	Euro	Euro
90 **	-	5,91	15,00 ***
110 **	6,65	8,13	19,00 ***
125 **	-	13,31 *	16,01
140 **	11,84	16,25	20,32
160 **	16,25	20,69	24,02
180	-	28,08	30,18
200	23,64 *	34,73	43,10
225	28,82	42,09	52,34
250	38,38 *	69,43	86,21
280	48,00	85,65	115,15
315	62,76	135,13	157,02
355	141,78	189,03	284,77
400	175,74	224,76	384,84
450	-	****	****
500	-	****	****

*) A richiesta, per quantità.
On request, for quantities.

****) Prezzi a richiesta.
Curve ottenute da tre settori di tubo PP saldati testa a testa.

**) Curva ottenuta dalla curva 90° tagliata a metà.
Bend obtained by the bend 90° cut in the middle.

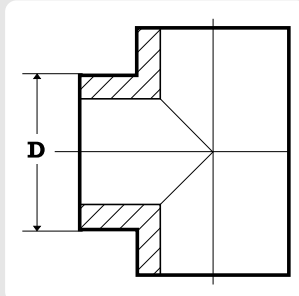
Prices on request.
Bends obtained by three sectors of PP pipe, all butt welded.

***) Gomito 45° PN10 con codoli prolungati.
45GO (D) P (PN)
Elbow 45° PN10 with extended spigots.
45GO (D) P (PN)

PE a richiesta per quantità
PE on request for quantities

Te 90° Tees 90°

PP: 90TE(D)P(PN) - PE 100: PHTE(D)P(PN)



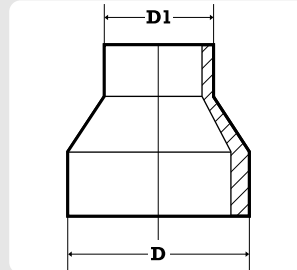
*) Prezzi a richiesta.
Te ottenute da tre settori di tubo PP saldati testa a testa.
Prices on request.
Tees obtained by three sectors of PP pipe, all butt welded.

PE a richiesta per quantità.
PE on request for quantities.

	SDR26	SDR17,6	SDR11
PP	PN4	PN6	PN10
PE100	PN6,3	PN10	PN16
D	Euro	Euro	Euro
63	-	-	8,95
75	-	-	14,16
90	-	-	20,32
110	-	21,42	24,02
125	-	28,82	40,64
140	-	39,14	48,02
160	-	59,82	73,88
180	-	94,52	107,76
200	-	118,13	132,38
225	143,99	152,82	178,57
250	-	214,12	252,46
280	-	295,29	310,94
315	-	346,99	394,08
355	-	*	*
400	450,37	486,44	-
450	-	*	*
500	-	*	*

Riduzioni Reducers

PP: PPTR(DD1)P(PN) - PE 100: PHRID



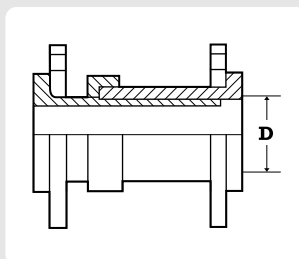
	SDR17,6	SDR11
PP	PN6	PN10
PE100	PN10	PN16
D D1	Euro	Euro
75 x 63	-	6,65
90 x 63	-	9,73
x 75	-	9,73
110 x 63	-	10,83
x 75	-	10,83
x 90	-	10,83
125 x 63	-	13,31
x 90	-	13,31
x 110	-	13,31
140 x 90	-	16,25
x 110	-	16,25
x 125	-	16,25
160 x 90	-	17,72
x 110	-	17,72
x 125	-	17,72
x 140	-	17,72
180 x 63	-	29,16
x 75	-	29,16
x 90	-	27,34
x 110	-	27,34
x 125	-	27,34
x 140	-	27,34
x 160	-	27,34
200 x 110	-	46,80
x 125	-	46,80
x 140	-	46,80
x 160	-	46,80
x 180	-	46,80

	SDR17,6	SDR11
PP	PN6	PN10
PE100	PN10	PN16
D D1	Euro	Euro
225 x 90	-	64,36
x 110	-	64,36
x 125	-	60,35
x 140	-	60,35
x 160	-	60,35
x 180	57,32	60,35
x 200	57,32	60,35
250 x 160	-	67,73
x 200	64,34	67,73
x 225	64,34	67,73
280 x 90	-	83,41
x 110	-	83,41
x 140	-	83,41
x 160	-	78,20
x 180	74,28	78,20
x 200	74,28	78,20
x 225	74,28	78,20
x 250	74,28	78,20
315 x 160	-	86,31
x 180	76,64	80,67
x 200	76,64	80,67
x 225	76,64	80,67
x 250	76,64	80,67
x 280	76,64	80,67
355 x 225	108,34	120,38
x 250	108,34	120,38
x 280	94,21	104,69
x 315	94,21	104,69
400 x 250	182,32	202,59
x 280	182,32	202,59
x 315	158,50	176,11
x 355	158,50	176,11
450 x 315	198,39	220,44
x 355	198,39	220,44
x 400	198,39	220,44

PE a richiesta per quantità.
PE on request for quantities.

Giunti di dilatazione con flange PVC PN10 Expansion Joints with PVC Flanges PN10

PPTGIDI



D	DN	Euro
63	50	133,48
90	80	149,83
110	100	193,76
125	125	238,29
160	150	280,22
200	200	347,16

Corsa = 80 mm
Con OR in EPDM.
A richiesta in FPM.

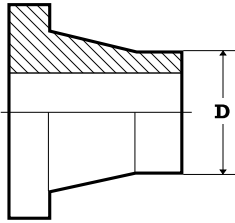
Stroke = 80mm
With OR in EPDM.
On demand in FPM.

Sconto differenziato.
Separate discount.



Collari Stubs

PP: CART(D)P(PN) - PE 100: PHCART(D)(PN)



*) A richiesta, per quantità.
On request, for quantities.

**) Solo PN2,5.
Only PN2,5.

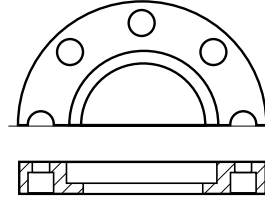
***) PN6 flange libere DN400.
PN10 flange libere DN500.
PN6 backing ring DN400.
PN10 backing ring DN500.

PE a richiesta per quantità
PE on request for quantities

	SDR26	SDR17,6	SDR11
PP	PN4	PN6	PN10
PE100	PN6,3	PN10	PN16
D	Euro	Euro	Euro
63	-	-	4,28
75	-	-	4,93
90	6,89*	7,14	7,39
110	8,62	8,75	9,42
125	11,09*	11,20	12,62
140	12,94*	13,06	14,16
160	15,95*	16,31	17,86
180	22,42*	22,91	27,71
200	27,80	28,82	29,55
225	31,41	32,64	34,48
250	46,99	48,37	49,27
280	49,44	53,50	56,03
315	56,21	59,60	65,88
355	85,65	90,09	95,43
400	151,36	162,42	190,87
450***	-	210,43	252,46
500**	258,62	-	-
630**	286,33	-	-

Flange libere PPG/Fe & Fe/Zn/Epoxy PN10 PPG/Fe Backing Rings & Fe/Zn/Epoxy PN10

FLPPGFE - FLFZE



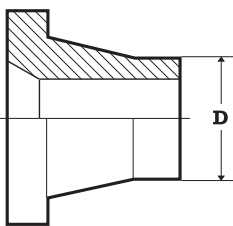
		PPG/Fe		Fe/Zn/Epoxy			
D	DN	Euro	Euro	D	DN	Euro	Euro
20	15	3,73	-	180	150	23,65	17,90
25	20	4,16	-	200	200	34,53	24,07
32	25	4,44	-	225	200	34,53	24,07
40	32	5,30	-	250	250	43,14	36,42
50	40	6,59	6,64	280	250	43,14	36,42
63	50	8,31	7,25	315	300	64,64	45,22
75	65	9,17	9,11	355	350	124,68	77,78
90	80	11,32	10,49	400	400	141,88	97,85
110	100	15,03	11,88	450	500	299,54	140,45
125	100	15,48	12,35	500	500	299,54	140,45
140	125	19,35	14,51	560	600	366,88	246,94
160	150	23,65	17,90	630	600	366,88	191,37

Cod. FLPPGFE
Flange libere profilate UNI PN10 per collari PPF e CART, in PPG con rinforzo in Fe.
Backing Rings profiled DIN PN10 for Stub Flanges CART, in PPG with Iron insert.
Sconto differenziato.
Separate discount.

Cod. FLFZE
Flange libere profilate UNI PN10 per collari CART, in Fe zincate +riv. epossidico.
Backing Rings profiled DIN PN10 for Stub Flanges CART, in Galvanized Iron Epoxy coated.

Collari speciali (smussati) Special Stub Flanges (chamfered)

CART(D)IDE

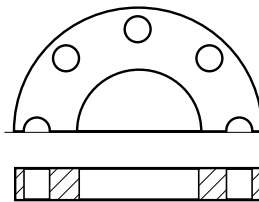


Per montaggio con valvole a farfalla
In case of Butterfly valves

	SDR11
	PN10
D	Euro
90	8,13
110	10,37
180	30,48
225	37,93
250	54,20
280	61,64
315	72,47
355	104,97
400	209,96

Flange libere PVC PN10 per collari CART PVC Backing Rings PN10 for Stub Flanges CART

CVFCT



D	DN	Euro
90	80	8,64
110	100	10,81
125	125	14,55
140	125	15,55
160	150	19,38
180	175	39,10
200	200	38,75
225	200	43,42
250	250	61,97
280	250	75,19
315	300	84,46